



[ALP438-12HR-BLK](#) [ALP438-12HR-SS](#) [ALP438-13-BLK](#) [ALP438-13-SS](#) [ALP438-23-BLK](#) [ALP438-23-SS](#)
[ALP438-40-BLK](#) [ALP438-40-SS](#)

12/13/23/40 GALLON PERFORATED WASTE BIN SERIES



ALP438-12HR-SS



ALP438-13-BLK



ALP438-23-SS



ALP438-40-BLK

Redefine waste management with our Perforated Waste Bins — where elegance meets efficiency. The thoughtfully designed bodies maximize space and seamlessly fit into tight areas in busy areas like offices, hotels, and retail stores. It offers waste disposal in areas such as hallways, casino floors, and lobbies without sacrificing accessible walkable space. The black perforated powder-coated steel and stainless steel finish add a touch of modern sophistication while ensuring lasting durability, making it an essential addition to any setting.

Practicality is key with this waste bin, featuring bag clips to keep trash bags securely in place and a hinged lid for quick, hassle-free disposal. Its body is heavy enough to stay stable yet light enough to move when needed. The outfitted, adjustable feet on three of the cans, will also help ensure secure placement on any surface. The waste bin's capacity is large enough to hold a substantial amount of waste while being small enough not to engulf your compact spaces. Available in both black and stainless steel, this bin offers a stylish, functional solution for any space. Outfit your space with our Perforated Waste Bin today, and enjoy a solution built to last a lifetime.

FEATURES

Durable: Its steel body ensures lasting sophistication and strength.

Practical: Each receptacle is outfitted with bag clips to keep trash bags securely in place for easy management.

Convenient: The hinged lid allows for quick, hassle-free disposal.

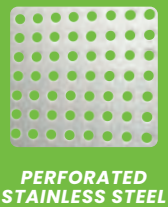
Stable: It's heavy enough to stay put yet light enough to move when needed.

Capacity: Its capacity can hold a substantial amount of waste without taking up too much room.

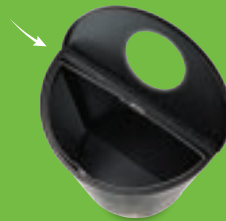
Color Options: Available in both black and stainless steel to suit any environment.

Stability: Each trash container is equipped with adjustable legs, providing enhanced stability and support on any surface.

FEATURES



DURABLE
Perforated steel ensures lasting sophistication and strength.



CONVENIENT
The hinged lid allows for quick, hassle-free disposal.



BAG CLIPS
PRACTICAL
Outfitted with bag clips to keep trash bags securely in place for easy management.

SPECIFICATIONS

Item SKU	Design	Color	Capacity	Dimensions	Weight
ALP438-12HR-BLK	Half Round	Black	12 Gallon	32.01" H x 17.99" W x 8.98" D	24.25 lbs.
ALP438-12HR-SS	Half Round	Stainless Steel	12 Gallon	32.01" H x 17.99" W x 8.98" D	19.84 lbs.
ALP438-13-BLK	Rectangular	Black	13 Gallon	30" H x 19.49" W x 10" D	26.24 lbs.
ALP438-13-SS	Rectangular	Stainless Steel	13 Gallon	30" H x 19.49" W x 10" D	24.25 lbs.
ALP438-23-BLK	Rectangular	Black	23 Gallon	30" H x 23.98" W x 12.48" D	33.07 lbs.
ALP438-23-SS	Rectangular	Stainless Steel	23 Gallon	30" H x 23.98" W x 12.48" D	31.97 lbs.
ALP438-40-BLK	Square	Black	40 Gallon	31.25" H x 21.75" W x 21.75" D	43.12 lbs.
ALP438-40-SS	Square	Stainless Steel	40 Gallon	31.25" H x 21.75" W x 21.75" D	39.46 lbs.